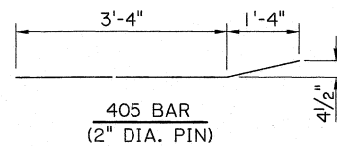
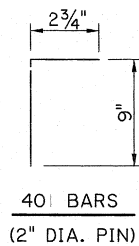
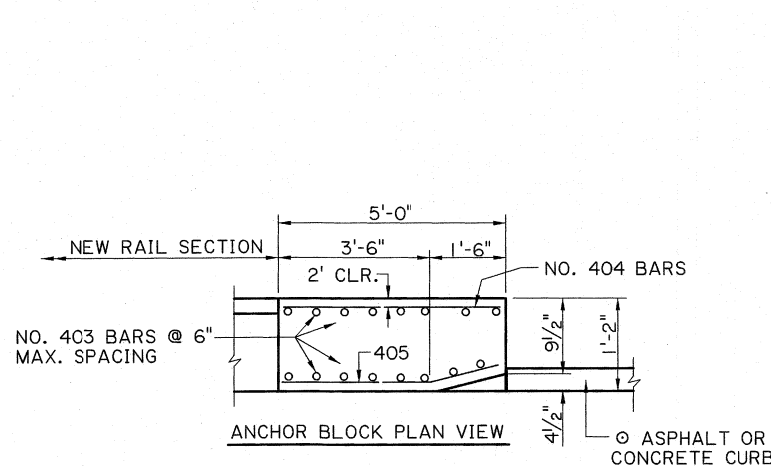
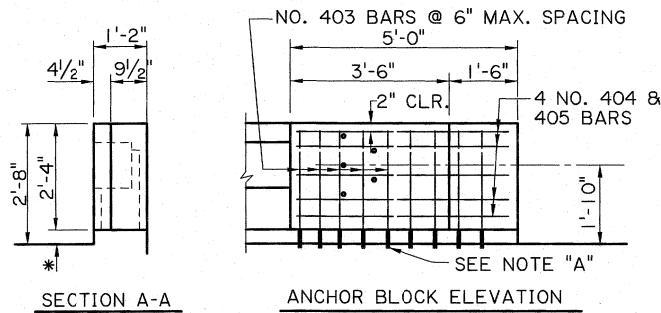


\* 4" EXISTING RAILING PARAPET



GENERAL NOTES

FOR ADDITIONAL INFORMATION ON GUARD RAIL, SEE STD. PLAN GR 200. ALL DIMENSIONS SHALL BE VERIFIED IN THE FIELD BY THE CONTRACTOR AND APPROVED BY THE PROJECT ENGINEER. © FOR CURB & TRANSITION INFORMATION, SEE SHEET 3 OF 10, GR-200.

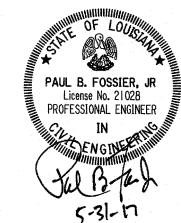
GUARD RAIL ANCHOR BLOCKS

ALL WORK AND MATERIALS REQUIRED TO REMOVE EXISTING RAILING AND CONSTRUCT THE ANCHOR BLOCK SHALL BE PAID FOR UNDER: GUARD RAIL ANCHOR BLOCK, PER EACH, ITEM 704-09-00100 CONCRETE IN CROSS HATCHED AREA SHALL BE REMOVED. THE EXISTING REINFORCING STEEL SHALL REMAIN IN PLACE AND SHALL BE CLEANED AND STRAIGHTENED TO THE SATISFACTION OF THE PROJECT ENGINEER BEFORE POURING NEW CONCRETE. THE REINFORCING STEEL IN THE 1'-6" X 4/2" SLOT MAY BE CUT OR BENT TO ACCOMMODATE THIS SLOT.

NOTE "A"

NO. 401 & 403 BARS SET IN 3/4" Ø DRILLED HOLES. CLEAN HOLES WITH COMPRESSED AIR AND MAKE THEM FREE OF ANY OIL OR RESIDUE. FILL HOLES WITH A TYPE V, GRADE 2 OR 3 EPOXY LISTED ON APPROVED MATERIALS LIST, PRODUCT CATEGORY "EPOXY RESIN SYSTEMS FOR CONCRETE." PLACE BARS IN HOLES AND WAIT THE MANUFACTURERS CURE TIME BEFORE POURING NEW CONCRETE.

FOR INFORMATIONAL PURPOSES ONLY



SHEET NUMBER	
DESIGNED	P. FOSSIER
CHECKED	C. GAUDRY
PARISH	
CONTROL SECTION	J. BENTON
STATE	P. FOSSIER
PROJECT	K. BRAUNER
REVISION OR CHANGE ORDER DESCRIPTION	
NO.	
DATE	
BY	P.F.
GUARDRAIL HEIGHT, ANCHOR BOLT NOTE AND BASE PLATE	
4-8-16	
BRIDGE AND STRUCTURAL DESIGN	
DOTD	
BD.2.6.4.2.04	